

## *FOR GOLTENS HIGH PRESSURE PUMP TYPE G1400 HP*



Technical information	
Weight:	approx. 15 kg
Dimension:	420 x 280 x 220
Max oil pressure rating (2 minutes):	1400 bar
Max continuous working (pressure/automatic):	1050 bar
Max air drive pressure:	8 bar (Kp/cm <sup>2</sup> )
Working ratio air: oil	1:188
Output flow against 0 bar (kp/cm <sup>2</sup> ):	0,5 litre/min.

  
**Goltens**  
 Oslo A.S.  
 Strømsveien 195-197  
 0668 Oslo, Norway  
 Tel: +47 22 88 39 30.  
 Fax: +47 22 88 39 31  
 E-mail: [oslo@goltens.com](mailto:oslo@goltens.com)  
 Web: <http://www.goltens.com>

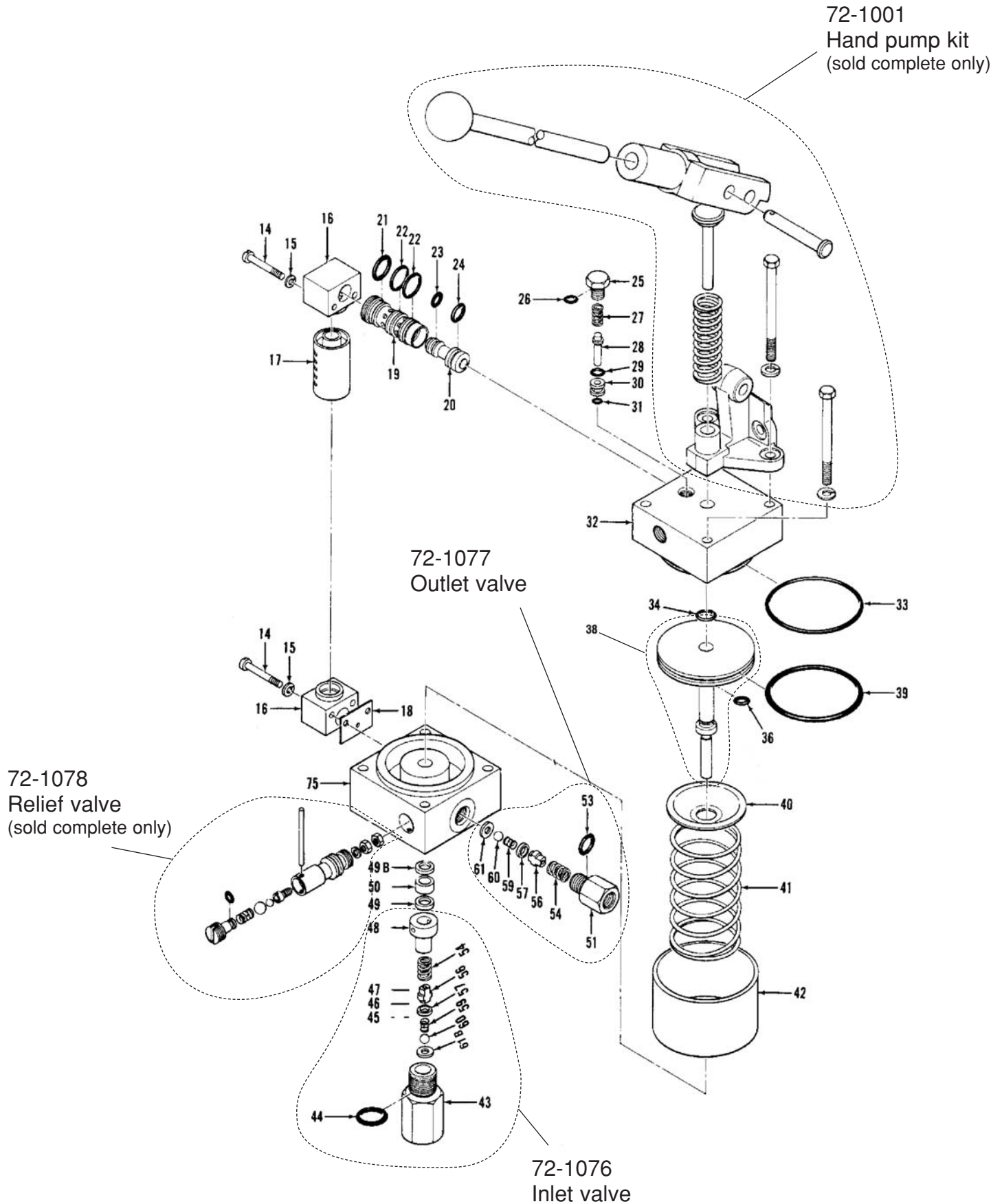
# Part list

## air driven hydraulic pump M-188

Ordering code: 72-10 XX (XX = pos.no.) Example pos. 16: 72-1016

72-1079: Packingset air: 21, 22, 23, 24, 26, 29, 31, 33, 34, 36, 39

72-1080: Packingset hydr.: 44, 49, 49B, 50, 53, 61, 61B.

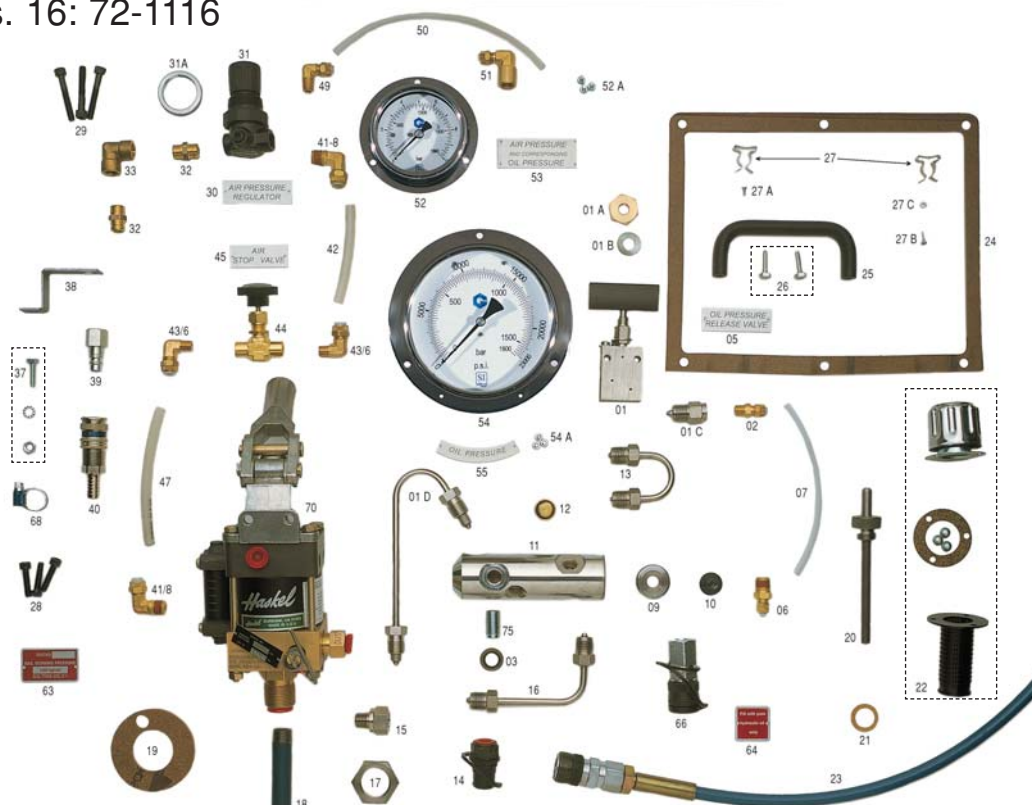


ITEM (Before 1975)	ITEM (After 1975)	DESCRIPTION	ITEM (Before 1975)	ITEM (After 1975)	DESCRIPTION
721001A	721001A	Hand pump kit	40	721041	Return spring
	721011	Lock washer	36	721042	Air barrel
	721012	Nut		721043	Fitting
2	721014	Screw	20	721044	O-ring
3	721015	Lock washer	18	721048	Spacer
13	721016	Exhaust cap	16	721049	Bearing
14	721017	Exhaust cap		721049 B	Back up
	721018	Muffler plate	17	721050	Seal
4	721019	Sleeve		721051	Outlet fitting
26	721020	Spool	45	721053	O-ring
1	721021	O-ring		721054	Spring
25	721022	O-ring		721056	Shank
5	721023	O-ring		721057	Ring
27	721024	O-ring		721059	Spring
6	721025	Plug	41	721060	Ball
7	721026	O-ring, 814-3		721061	Seat
8	721027	Spring		721061 B	Seat
9	721028	Valve pilot		721068	Ball
10	721029	O-ring		721069	Ball
11	721030	Tube		721072	O-ring
12	721031	O-ring	19	721075	Body
34	721032	Air cap		721076	Inlet value
	721033	O-ring		721077	Outlet value
32	721034	O-ring		721078	Relief valve
31	721036	O-ring		721079	Packing set air
33	721037	O-ring		721080	Packing set hydr.
38	721038	Air piston w/plunger			
39	721040	Spring support			

# Part list G 1400 HP

Ordering code: 72-11XX (XX=pos.no.)

Example pos. 16: 72-1116



ITEM	DESCRIPTION	ITEM	DESCRIPTION
72-1101	Valve 120A	72-1144	Valve air 150A
72-1101A	Nut	72-1145	Plate air stop valve
72-1101B	Washer	72-1146	Elbow
72-1101C	Adapter	72-1147	Tube
72-1101D	HP tube	72-1148	Elbow
72-1102	Adapter	72-1149	Elbow
72-1103	Ring	72-1150	Tube
72-1105	Plate	72-1151	Elbow
72-1106	Adapter	72-1152	Manometer 0-10 bar
72-1107	Tube	72-1152A	Screws (3 pcs)
72-1109	Washer	72-1152B	Display pane
72-1110	Screw	72-1153	Plate air/oil pressure
72-1111	Manifold 6800	72-1154	Manometer 0-1500 bar M-6800
72-1111A	Manifold 8430	72-1154A	Screws (3 pcs)
72-1112	Screw	72-1154B	Display pane
72-1113	HP tube	72-1155	Plate oil pressure
72-1114	Quick coupling oil male	72-1159	Manometer 0-1500 bar M-8430
72-1115	Adapter	72-1160	Air pressure regulator complete
72-1116	HP tube	72-1162	Lable
72-1117	Lock-nut	72-1163	Plate max working pressure
72-1118	Suction pipe	72-1164	Plate pure hydraulic oil
72-1119	Washer	72-1166	Quick coupling female
72-1120	Sounding rod	72-1167	Hose 2 m
72-1121	Gasket	72-1168	Hose clip
72-1122	Filter	72-1170	Air/hydraulic pump M188
72-1122B	Screws (2 pcs)	72-1172	Cabinet
72-1123	HP hose 3 m	72-1173	Oil tank
72-1124	Gasket	72-1174	Pump complete M-8430
72-1125	Handle	72-1175	Nipple
72-1126	Screw	72-1176	Pump complete M-6800
72-1127	Clips	72-1176B	Pump for exchange
72-1127A	Screw	72-1176C	Pump for exchange (seawater)
72-1127B	Screw	72-1177	HP hose 1,5 M
72-1127C	Nut	72-1178	HP hose 6,0 M
72-1128	Screw	72-1179	HP hose 1,0 M
72-1129	Screw	72-1180	HP hose 2,0 M
72-1130	Air pressure plate	72-1183	Quick coupling male
72-1130A	Plate push/pull	72-1184	Quick coupling female
72-1131	Air pressure regulator	72-1185	HP distributor
72-1131A	Ring	72-1191	Gasket
72-1132	Nipple	72-1193	Adapter
72-1133	Elbow	72-1194	Gasket
72-1137	Screw	72-1197	Screw
72-1138	Bracket	72-1198	Screw
72-1139	Quick coupling air male	72-1183A	Enerpac Male
72-1140	Quick coupling air female	72-1184A	Enerpac Female
72-1141	Elbow	72-1184B	Adapter (HP-hose/female)
72-1142	Tube	72-1184C	Adapter (HP hose/male)
72-1143	Elbow		

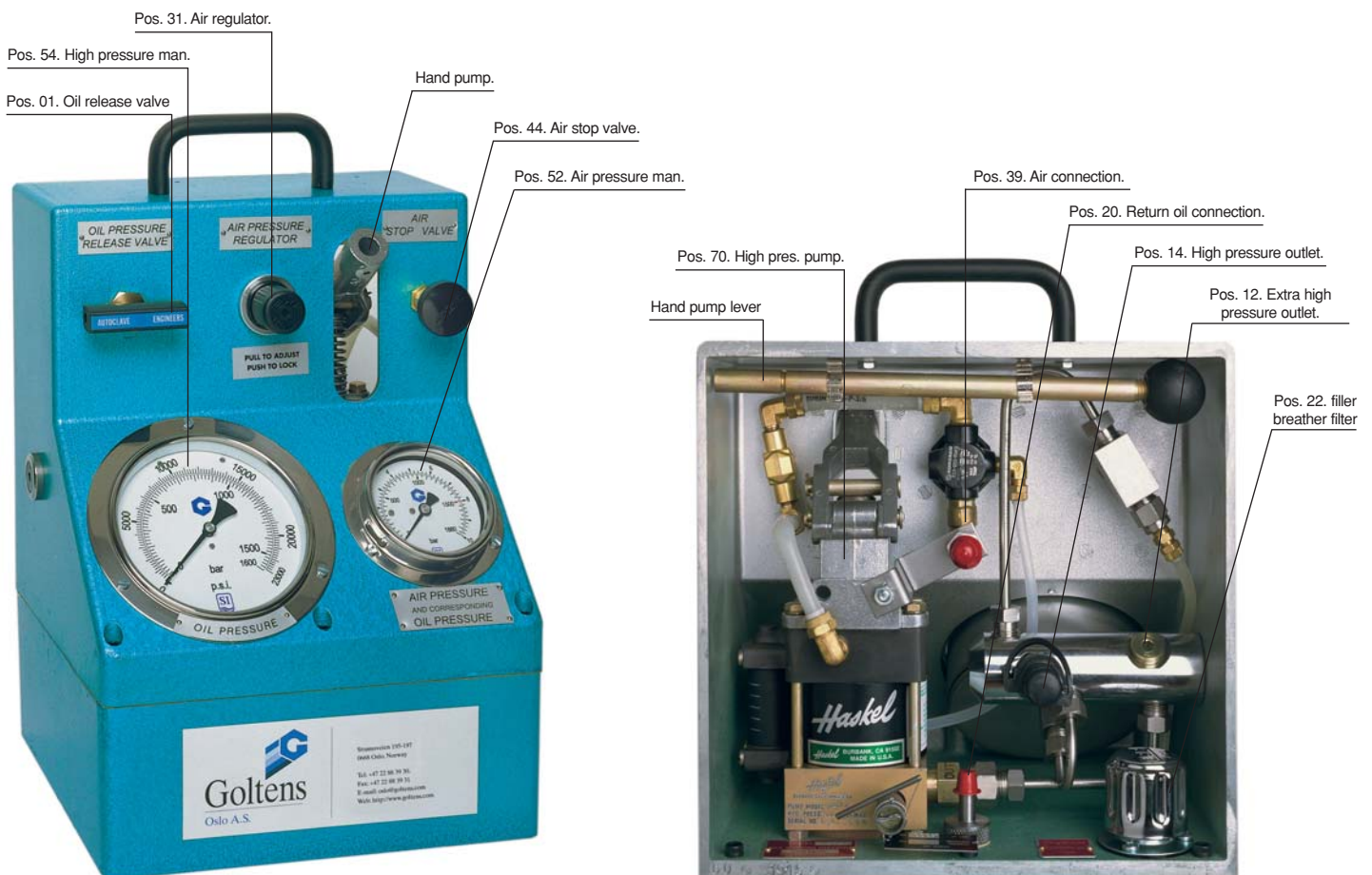


# Instruction manual

1. Fill oiltank with approx. 4l. pure hydraulic oil through pos. no. 22.
2. Connect air hose to pos. 39. Max. air pressure 8 bar or 115 PSI.
3. Circulate oil in pump unit by opening air stop valve pos 44 and oil release valve pos 01.
4. Preset desired oil pressure with air pressure regulator pos 31 according to corresponding scale on air manometer pos 52. Always preset this lower than the actual needed pressure.
5. Connect high pressure hose from hydraulic tool to pos. 14, then close oil release valve pos. 01.
6. If bleeding is necessary, circulate oil through hydraulic tool and back to oil tank via transparent plastic hose connected to pos. 20 on pump unit.
7. Close bleeding screw on hydraulic tool and pressure will rise. Watch oil pressure manometer pos. 54 and make final adjustments with air pressure regulator pos. 31 to obtain the desired oil pressure. The G- pump will now automatically keep the pressure even with a minor leakage in the hydraulic system.
8. If not sufficient air pressure is available to obtain the desired oil pressure, use the hand pump in addition.
9. The safety valve is adjusted in accordance with the release pressure shown on the label attached to the back side of G-pump.
10. Pos. 12 is a high pressure outlet for eventual extra manometer or extra high pressure hose. Thread in bore M 16 x 1,5 with a 5 mm diam. seat 60°.

## Oiltype: Hydraulic oil Rando 32.

**Your G-pump is a precision tool and we advice you to use and store it accordingly.**



The services listed below are all carried out by in house equipment and expertise. Our management is capable and experienced in tying these services together in small and large projects to suit the owners needs. For other services not listed, we co-operate with specialized companies so the owner can select to have one main contractor to tie the project together.

## specialized services

- Crankshaft Grinding
  - in Situ
  - in Workshop
- Line Boring of Engine Bed Plates in Situ or in Workshop
- Landing Surfaces in Situ
- Alignment and Chocking
- Laser based alignment
- Broken Stud Removal

## reconditioning services

- Centrifugal Casting of White Metal Bearings
- Fuel Injectors and Pumps
- Connecting Rods
- Exhaust Valves / Seats
- Cylinder Heads
- Pistons
- Turbochargers
- Governors

## trading/supply

- MKK and Alfa Laval Separator Spares
- Bearings
- Diesel engine parts
- Piston Rings
- Hydraulic Pumps
- Fuel equipment
- Miscellaneous parts
- Spare parts for Aker cranes

## repair services *(including voyage repairs)*

- Diesel Engines
- Steam Turbines
- Shaft Lines
- Propellers & Rudders
- Winches
- Valves, Pumps, COW Machines
- Hatch covers
- Ro/Ro Equipment
- Automation Systems
- Electrical Systems
- Hydraulic Systems
- Steel Structures
- Pipelines
- Blasting & Painting
- Cleaning
- Staging
- Service on Aker cranes (and others)

