

# Remote Panel RP-3000XT for easYgen-3000XT Series Genset Controls



## DESCRIPTION

Woodward's RP-3000XT is a touch screen remote control and annunciation panel for use with the easYgen-3000XT series controls. It is particularly useful with the back panel mounted easYgen-3100XT/3400XT, providing control from the front panel with greatly reduced wiring to the access door, while keeping high voltage connections located safely on the back panel.

The RP-3000XT offers all the HMI resources that the display variants easYgen-3200XT/3500XT offer, but with touch screen technology. Irrespective of the easYgen-3000XT variants, this compact HMI solution connects to up to 32 XT controls (select and access one easYgen-3000XT at a time).

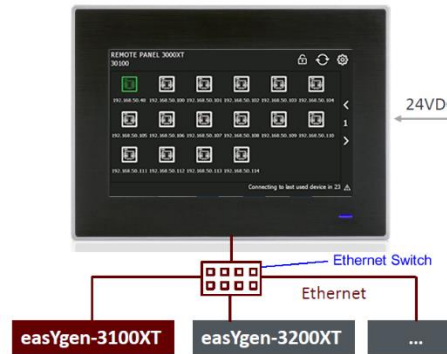
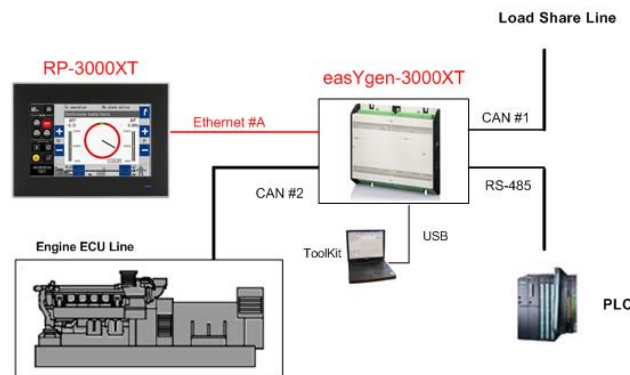
The RP-3000XT offers switchgear builders, genset packagers, and system integrators an off-the-shelf HMI option for any application where a secure remote control, monitoring and visualization is desired, such as hospitals, data centers, offshore rigs, landfill and wastewater gas-to-power applications to name a few.

In a paralleling application, the RP-3000XT provides the flexibility to connect each of the easYgen-3000XT controls (one RP-3000XT for one easYgen-3000XT) or to connect multiple of the easYgen-3000XT (one RP-3000XT for a fleet of easYgen-3000XTs, accessing one at a time). The communication between the two devices are always through Ethernet.

## Features

### RP-3000XT features help realize following use cases:

- Mounted to the front door and connected with a back panel mounted easYgen-3100XT or easYgen-3400XT for a safe and compact installation
- Installed away from genset room and connected with a front panel mounted easYgen-3200XT or easYgen-3500XT for applications requiring multiple HMIs
- Mounted to the front door and connected to a fleet of easYgen-3000XT series controls (up to 32) for cost sensitive and/or space constrained applications
- Power ON LED at face plate
- Multi-lingual display capability of the connected easYgen-XT (RP-3000XT menu in English)



- Plug-and-Play remote annunciation and remote control of the easYgen-3000XT Series genset controls
- Generic remote panel, connects to all easYgen-3000XT series controls
- Multi-Cast function, offers connection to a fleet of easYgen-3000XT controls (one at a time)
- Offers on-the-fly configuration with same security levels as easYgen-3000XT
- Simplifies wiring to the access door and keeps high voltage connections remote
- Small footprint makes compact installations
- Touch screen and Color display
- Ethernet communication to genset control
- Multi-lingual Capability
- CE Marked
- UL/cUL Listing

# SPECIFICATIONS

<b>Power supply</b>		24 Vdc ±10%
Intrinsic consumption	.....	typical 7 W
Ambient temperature (operation)	.....	-20 to 60 °C (-4 to 140 °F)
Ambient temperature (storage)	.....	-30 to 70 °C (-22 to 158 °F)
Ambient humidity	.....	10 to 90% RH@40 °C, non-condensing
<b>Housing</b>	Front panel mounting	PC plus ABS (with die-cast aluminum alloy front bezel)
Dimensions	WxHxD	03.4 × 150 × 43.7 mm
Front cutout	WxH	192 × 138.5 mm
Front	.....	insulating surface
Weight	.....	approx. 1 kg
Sealing	Front	IP66 (with clamp fastening)
Connection (power supply)	.....	screw/plug terminals 2.5 mm <sup>2</sup>
Interface (others not to be used)	.....	Ethernet

## System Hardware

CPU	.....	RISC processor with 32 bits
	.....	600 MHz (ARM® Cortex™-AB)
Backup Memory	.....	FRAM 128 KB
Memory	.....	DDR2 256 MB on board
Storage	.....	512 MB on board, SLC type
Power-On LED bar	.....	blue

## Software

Operating System	.....	Microsoft® Windows CE 6.0
Woodward Application	.....	Remote Panel RP-3000XT software

....Auto-start software to connect to an easYgen-3000XT  
 ..... for remote control via Ethernet

## Display

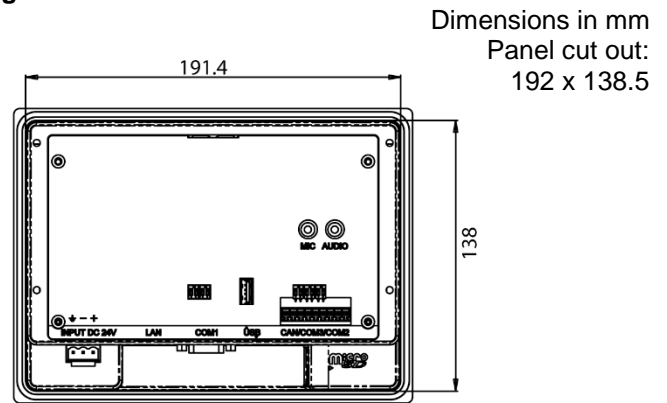
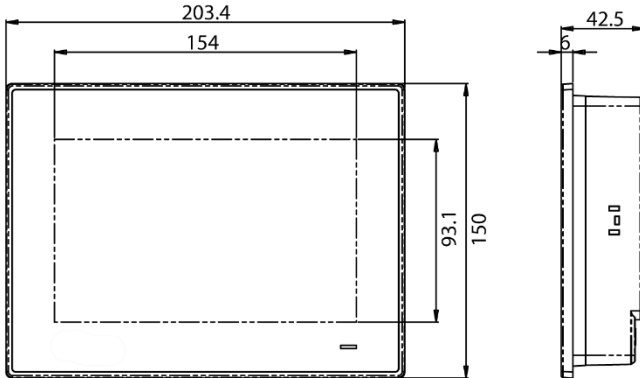
Type	.....	WVGA TFT LCD
Size	.....	177.8 mm (7")
Max. Resolution	.....	800 x 480
Max. Colors	.....	64k
Luminance (cd/m <sup>2</sup> )	.....	500
Viewing Angle (H/V)	.....	140/120
Backlight Life	.....	LED; 50,000 h
Brightness adjustable	.....	yes
Contrast Ratio	.....	700:1

## Touch Screen

Life span	.....	36 million touches
	.....	at 8 mm diameter finger point through silicone rubber
	.....	bearing at least 250 g two times per second
Light	.....	Transmission Above 80%
Resolution	.....	Linearity
Beep	.....	ON/OFF by software
Type	.....	5-wire, analog resistive
Vibration protection	.....	Operating, random vibration 1 Grms (5 to 500 Hz)
<b>Disturbance test (CE)</b>	.....	tested according to applicable EN guidelines
<b>Listings</b>	.....	Industrial Control Equipment UL 508 certification
	.....	CE, BSML, CCC, UL, FCC Class A

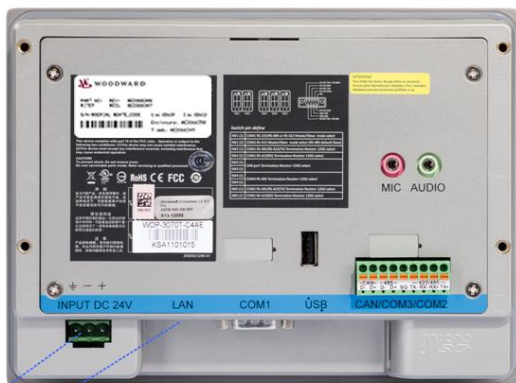
# DIMENSIONS

Plastic housing with metal frame for front panel mounting



Dimensions in mm  
 Panel cut out:  
 192 x 138.5

# TERMINAL DIAGRAM

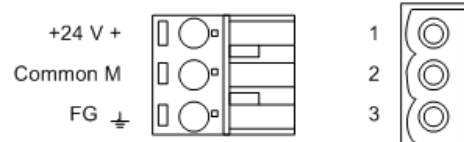


- 1 Power supply
- 2 Ethernet Interface

Other interfaces not used for this application!

### Power supply terminal (1):

Low voltage / Limited Energy power source



1  
2

## REMOTE CONTROL AND CONNECTION

The easYgen-XT to be remotely controlled must be in the same Ethernet network as the Remote Panel RP-3000XT. After auto-start procedure, the MULTICAST screen presents all easYgen-XT in the current network by icon and IP address: see figure 1. Manual selection by touching the icon or with auto-setup countdown the BASE screen will open and enable remote access to the preferred easYgen-XT: see figure 3.

Otherwise, if the preferred easYgen-XT is not found, the SETTINGS screen gives access to adjust network setting, and additionally auto-connect type and brightness level: see figure 2.

The MULTICAST screen presents the network view for device selection (1) of up to 32 easYgen-XT:

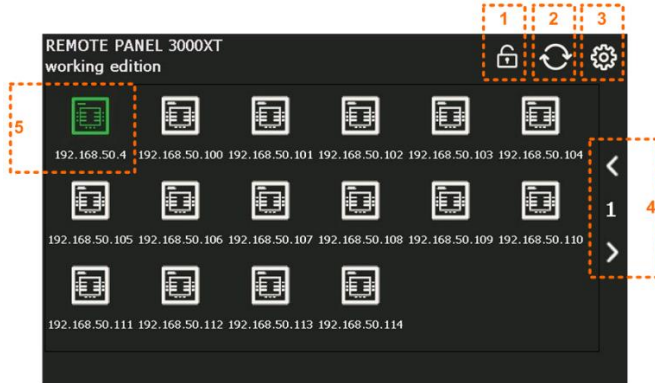


Figure 1: **MULTICAST** screen with

- 1) Lock touch screen for cleaning
- 2) Refresh network overview
- 3) Open SETTINGS screen
- 4) Go to next page (if more than 16 easYgen-XT)
- 5) Icon and IP address of the easYgen-XT remote control candidate (green = latest connected)

The SETTINGS screen allows network (4), auto-connect (1 and 2), and brightness adjustment (3):

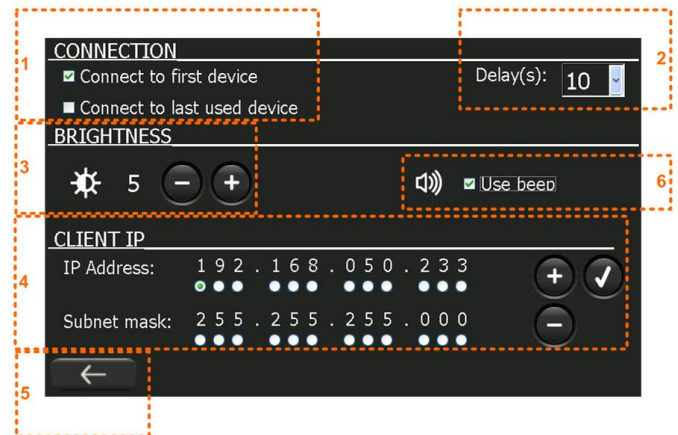


Figure 2: **SETTINGS** screen with

- 1) Three auto-connect pre-sets  
first / latest / no auto-connect (nothing checked)
- 2) Delay time before auto-connecting
- 3) Brightness adjustment between 0 and 10
- 4) CLIENT IP settings to adjust the IP address of the RP-3000XT and the Ethernet network settings
- 5) Back to MULTICAST screen
- 6) Beep by touching screen

... and finally the **BASE** screen mirrors the easYgen-XT HMI and front panel buttons:

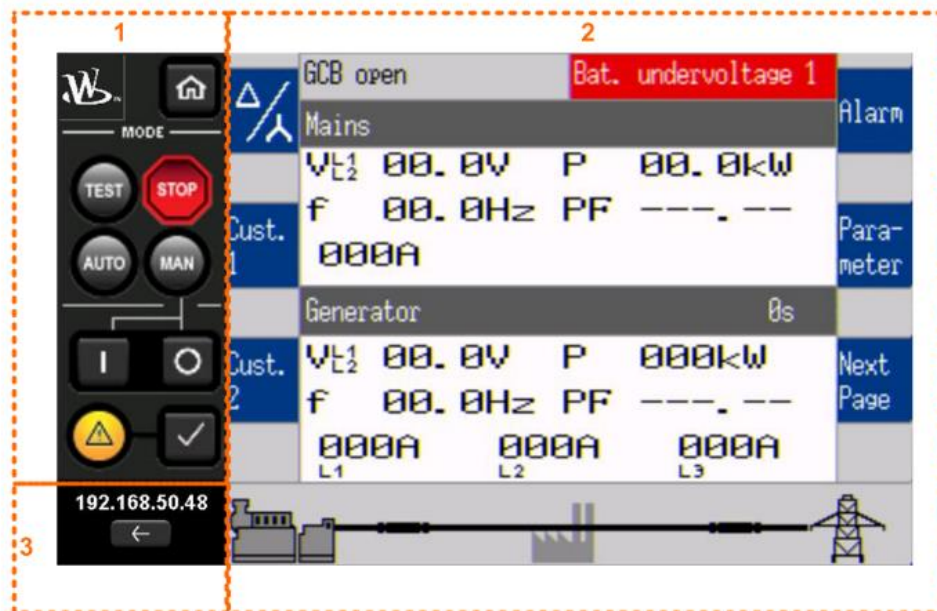


Figure 3: **BASE** screen with

- 1) Simulated easYgen-XT front panel buttons
- 2) Mirrored easYgen-XT HMI screen
- 3) IP address of connected easYgen-XT and back arrow to MULTICAST screen

**CONTACT**
**North & Central America**

Tel.: +1 970 962 7331  
 ✉ [SalesPGD\\_NAandCA@woodward.com](mailto:SalesPGD_NAandCA@woodward.com)

**South America**

Tel.: +55 19 3708 4800  
 ✉ [SalesPGD\\_SA@woodward.com](mailto:SalesPGD_SA@woodward.com)

**Europe**

Tel. Stuttgart: +49 711 78954 510  
 Tel. Kempen: +49 2152 145 331  
 ✉ [SalesPGD\\_EUROPE@woodward.com](mailto:SalesPGD_EUROPE@woodward.com)

**Middle East & Africa**

Tel.: +971 2 6275185  
 ✉ [SalesPGD\\_MEA@woodward.com](mailto:SalesPGD_MEA@woodward.com)

**Russia**

Tel.: +7 812 319 3007  
 ✉ [SalesPGD\\_RUSSIA@woodward.com](mailto:SalesPGD_RUSSIA@woodward.com)

**China**

Tel.: +86 512 8818 5515  
 ✉ [SalesPGD\\_CHINA@woodward.com](mailto:SalesPGD_CHINA@woodward.com)

**India**

Tel.: +91 124 4399 500  
 ✉ [SalesPGD\\_INDIA@woodward.com](mailto:SalesPGD_INDIA@woodward.com)

**ASEAN & Oceania**

Tel.: +49 711 78954 510  
 ✉ [SalesPGD\\_ASEAN@woodward.com](mailto:SalesPGD_ASEAN@woodward.com)

[www.woodward.com](http://www.woodward.com)

Subject to alterations, errors excepted.

Subject to technical modifications.

This document is distributed for informational purposes only. It is not to be construed as creating or becoming part of any Woodward Company contractual or warranty obligation unless expressly stated in a written sales contract.

We appreciate your comments about the content of our publications. Please send comments including the document number below to [stgt-doc@woodward.com](mailto:stgt-doc@woodward.com)

© **Woodward**  
**All Rights Reserved**

For more information contact:

**FEATURES OVERVIEW**

<b>EASYGEN RP-3000<sup>XT</sup></b> <small>Remote Panel</small>		Model	RP-3000XT
<b>HMI</b>			
Analog Resistive Touch Screen			Yes
Color display			✓
Power ON LED bar			✓
HMI customizable			Please consult your Woodward representative
<b>I/Os</b>			
Ethernet			1
<b>Remote Terminal Control</b>			
Based on VNC			✓
<b>Listings/Approvals</b>			
UL / cUL Listing			✓
FCC			Class A
CE Marked			✓
<b>Hardware</b>			<b>P/N:</b>
Plastic housing with Die-cast aluminum alloy front bezel and display (front panel mounting)			<b>8446-1061</b>
Mounting KIT (clamp set for panel mount)			8923-2292

**Related Products**

- Genset control **easYgen-3100XT/3200XT-P1** Product Specification (# 37582)
- Genset control **easYgen-3400XT/3500XT-P1/P2** Product Specification (# 37583)

**Product Documentation**

- Remote panel **RP-3000XT** Technical Manual (# 37593)
- Genset control **easYgen-3100XT/3200XT-P1** Technical Manual (# 37574)
- Genset control **easYgen-3400XT/3500XT-P1** Technical Manual (# 37580)
- Genset control **easYgen-3400XT/3500XT-P2** Technical Manual (# 37581)