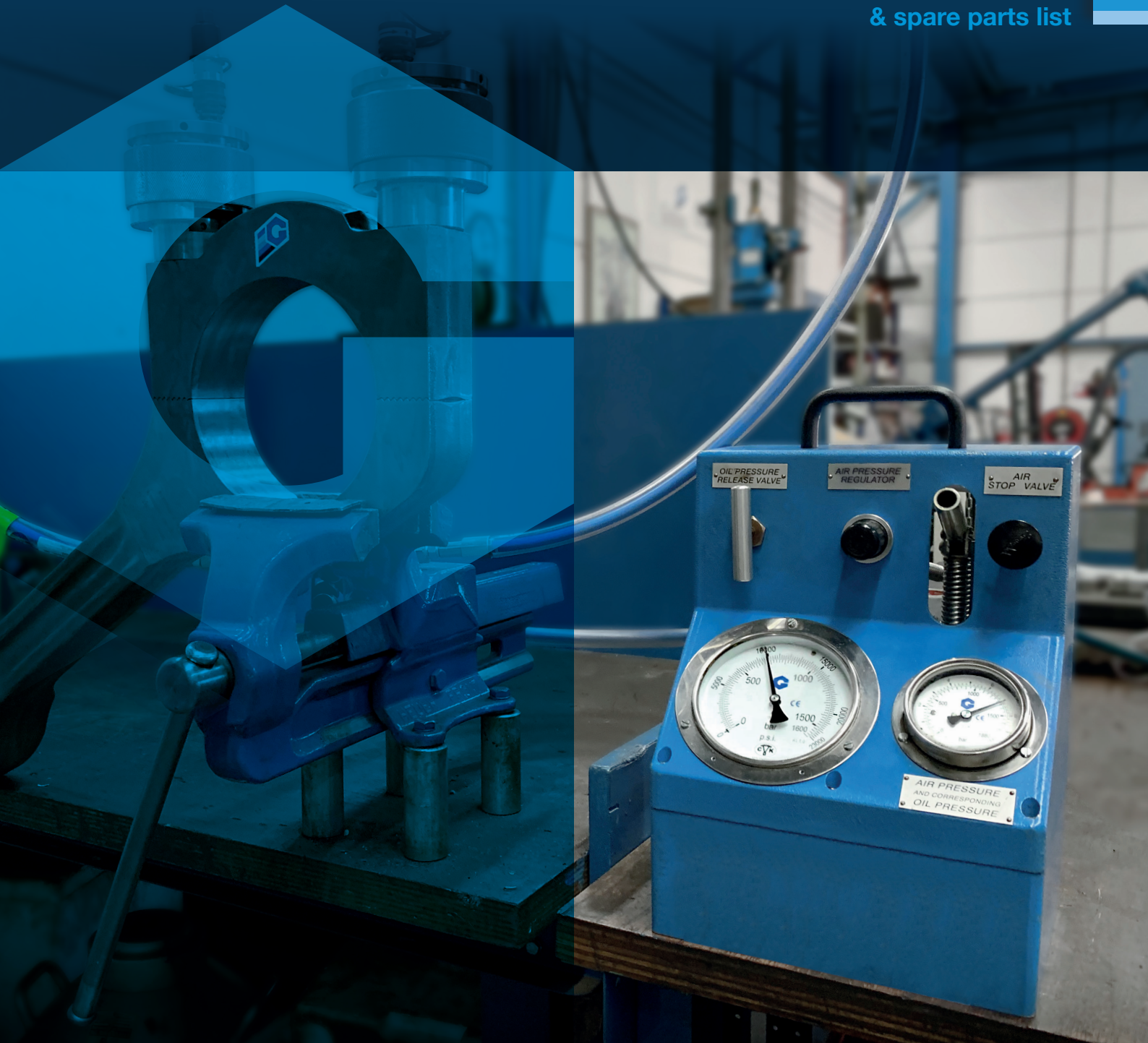


Goltens High Pressure Pump Type G1400 HP-06

Instruction manual
& spare parts list



On Site Machining

Engine Services

Green Technologies

Ship Repair

Industrial Services

Spare Parts

Technical information



Weight:	approx. 15 kg
Dimension:	420 x 280 x 220
Max oil pressure rating (2 minutes):	1400 bar
Max continuous working (pressure/automatic):	1050 bar
Max air drive pressure:	8 bar (Kp/cm2)
Working ratio air: oil	1:188
Output flow against 0 bar (kp/cm2):	0,5 litre/min.

Parts list air driven hydraulic pump

Ordering code: 72-10 XX (XX = pos.no.) Example pos. 16: 72-1016

M-188:

72-1079: Packingset air: 21, 22, 23, 24, 26, 29, 31, 33, 34, 36, 39

72-1080: Packingset hydr.: 44, 49, 49B, 50, 53, 61, 61B

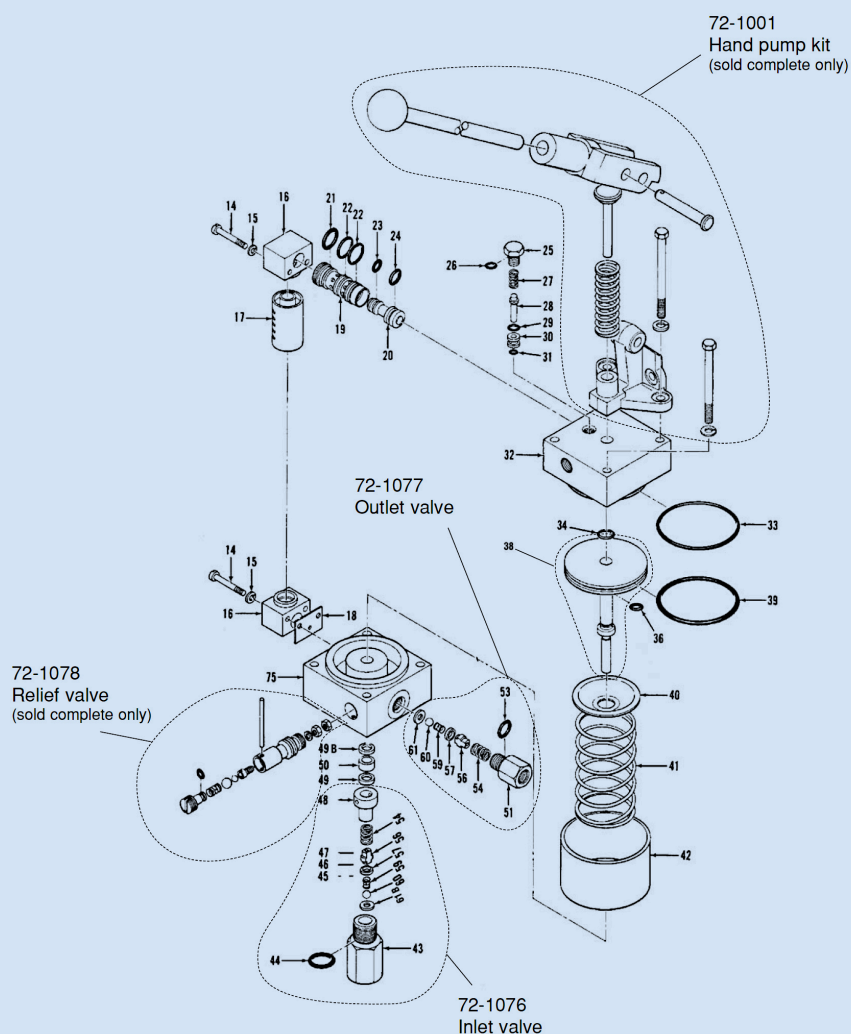
Packing sets come as complete set, not as individual parts.

Please send picture of the air drive hydraulic pump when ordering hydraulic or air seal kits.

A-1700:

72-2360 Seal kit hydraulic A1700 pump

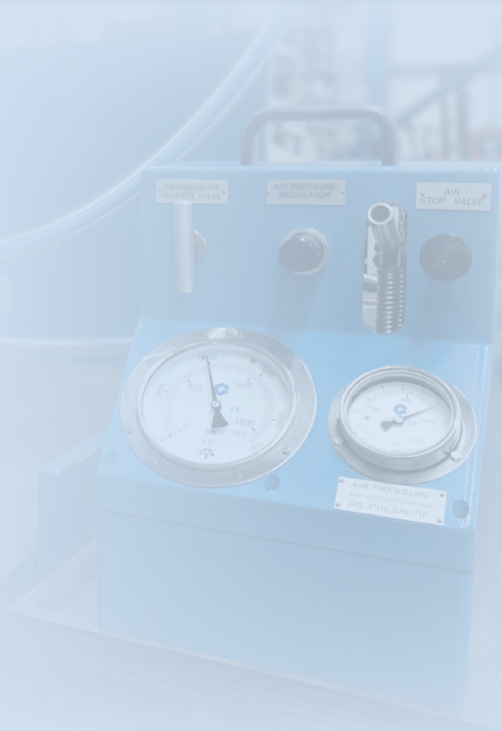
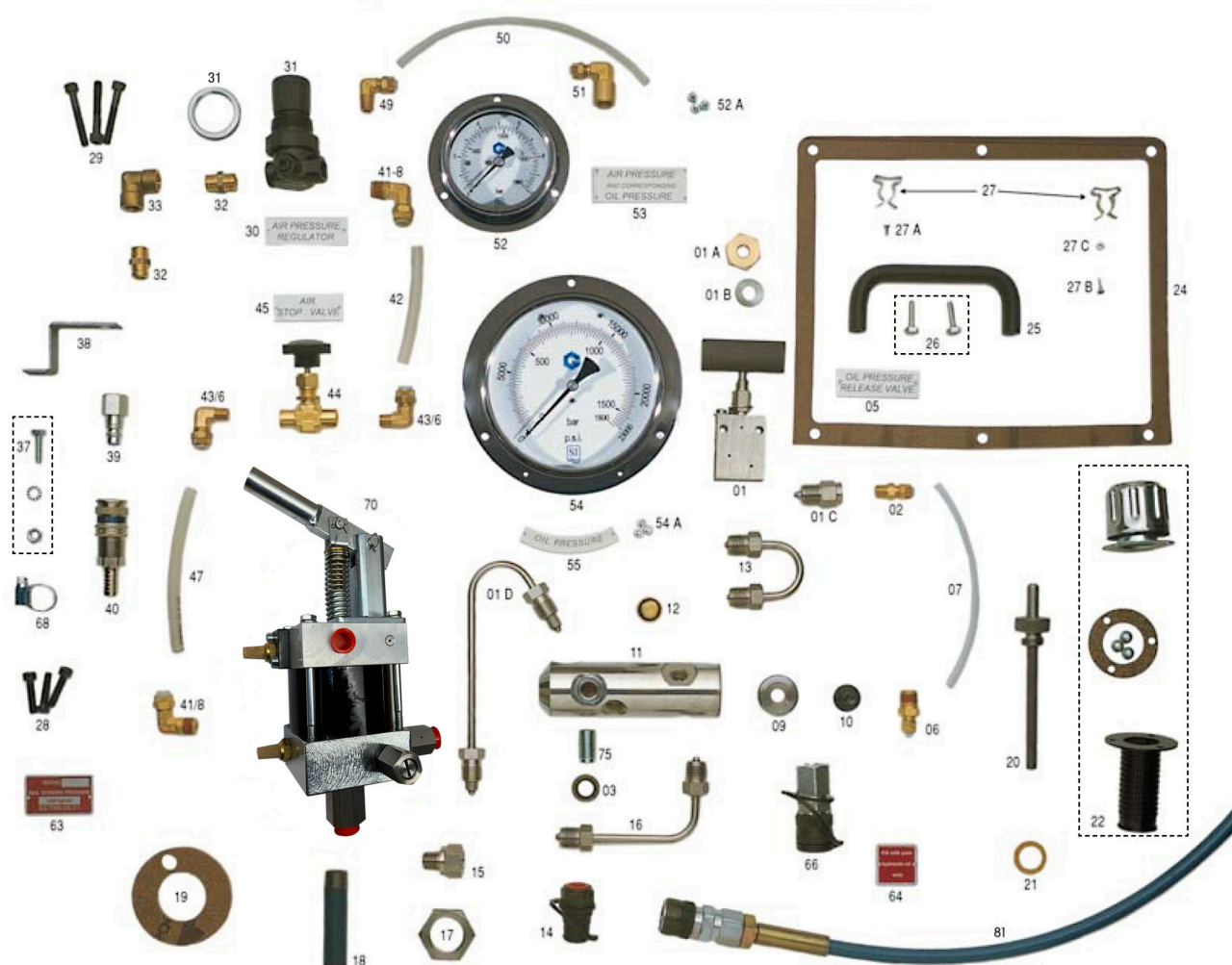
72-2361 Seal kit pneumatic A1700 pump



Parts list G 1400 HP-06

Ordering code: 72-11XX (XX=pos.no.)

Example pos. 16: 72-1116



ITEM	DESCRIPTION	ITEM	DESCRIPTION
72-1101	Valve 120A	72-1130	Air pressure plate
72-1101A	Nut	72-1130A	Plate push/pull
72-1101B	Washer	72-1131	Air pressure regulator
72-1101C	Adapter	72-1131A	Ring
72-1101D	HP tube	72-1132	Nipple
72-1102	Adapter	72-1133	Elbow
72-1103	Ring	72-1137	Screw
72-1105	Plate	72-1138	Bracket
72-1106	Adapter	72-1139	Quick coupling air male
72-1107	Tube	72-1140	Quick coupling air female
72-1109	Washer	72-1141	Elbow
72-1110	Screw	72-1142	Tube
72-1111	Manifold 6800	72-1143	Elbow
72-1112	Screw	72-1144	Valve air 150A
72-1113	HP tube	72-1145	Plate air stop valve
72-1114	Quick coupling oil male	72-1147	Tube
72-1115	Adapter	72-1149	Elbow
72-1116	HP tube	72-1150	Tube
72-1117	Lock-nut	72-1151	Elbow
72-1118	Suction pipe	72-1152	Manometer 0-10 bar
72-1119	Washer	72-1152A	Screws (3 pcs)
72-1120	Sounding rod	72-1153	Plate air/oil pressure
72-1121	Gasket	72-1154	Manometer 0-1500 bar M-6800
72-1122	Filter	72-1154A	Screws (3 pcs)
72-1122B	Screws (2 pcs)	72-1155	Plate oil pressure
72-1124	Gasket	72-1162	Lable
72-1125	Handle	72-1163	Plate max working pressure
72-1126	Screw	72-1164	Plate pure hydraulic oil
72-1127	Clips	72-1166	Quick coupling female
72-1127A	Screw	72-1168	Hose clip
72-1127B	Screw	72-1170	Air/hydraulic pump
72-1127C	Nut	72-1172/73	Housing
72-1128	Screw	72-1175	Nipple
72-1129	Screw	72-1181	HP hose 3,0 M

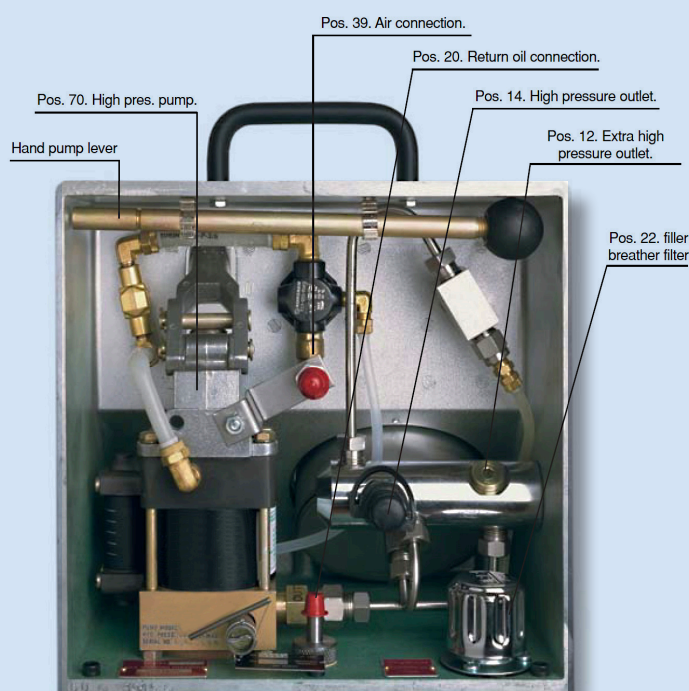
Instruction manual

1. Fill oiltank with approx. 4l. pure hydraulic oil through pos. no. 22.
2. Connect air hose to pos. 39. Max. air pressure 8 bar or 115 PSI.
3. Circulate oil in pump unit by opening air stop valve pos 44 and oil release valve pos 01.
4. Preset desired oil pressure with air pressure regulator pos 31 according to corresponding scale on air manometer pos 52. Always preset this lower than the actual needed pressure.
5. Connect high pressure hose from hydraulic tool to pos. 14, then close oil release valve pos. 01.
6. If bleeding is necessary, circulate oil through hydraulic tool and back to oil tank via transparent plastic hose connected to pos. 20 on pump unit.
7. Close bleeding screw on hydraulic tool and pressure will rise. Watch oil pressure manometer pos. 54 and make final adjustments with air pressure regulator pos. 31 to obtain the desired oil pressure. The G- pump will now automatically keep the pressure even with a minor leakage in the hydraulic system.
8. If not sufficient air pressure is available to obtain the desired oil pressure, use the hand pump in addition.
9. The safety valve is adjusted in accordance with the release pressure shown on the label attached to the back side of G-pump.
10. Pos.12 is a high pressure outlet for eventual extra manometer or extra high pressure hose. Thread in bore M 16 x 1,5 with a 5 mm diam. seat 60°.

Oiltype: Hydraulic oil Rando 32



Your G-pump is a precision tool and we advice you to use and store it accordingly.





Worldwide Service Network

Goltens is the only independent repair specialist offering worldwide all-inclusive service.



Goltens Rotterdam B.V.

Lorentzweg 29
3208 LJ Spijkensisse
The Netherlands
Tel.: +31 181 465 100 (24/7)
Email: rotterdam@goltens.com