

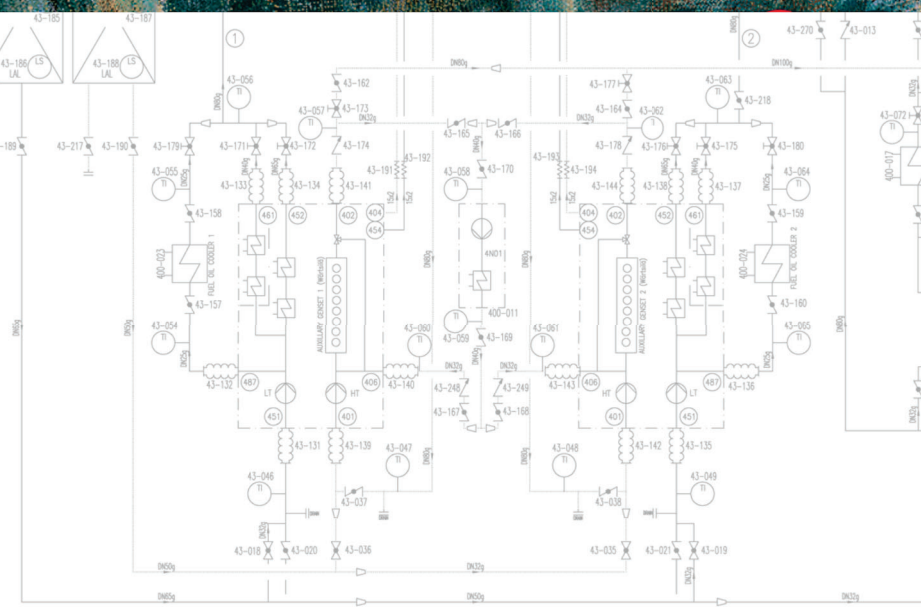


Retrofit Solutions

A photograph of a large industrial structure, possibly a ship's hull or a large building, with a complex network of pipes and scaffolding. The structure is painted in a light blue color. The background is a bright, hazy sky.

Getting the timing and implementation right can be challenging, and coordinating the project around the ship's schedule is even more challenging. That's why experienced, independent support is crucial for achieving successful implementation.

With offices in 14 countries, Goltens efficiently executes these complex retrofits. As our customer, you coordinate with Goltens experts in your own region, while we synchronize our global teams to handle your project, no matter where your vessel sails.



Your Retrofit solutions

Goltens specializes in a wide range of retrofit solutions for diverse ship types.

With a proven and flexible process, Goltens leverages advanced 3D scanning technology as the foundation of efficient retrofit execution.

Any retrofit on any ship type.

Experience high-quality turnkey projects delivered by Goltens, minimal vessel downtime and realistic timelines to get your retrofit completed.



Contact us:

+31 (0)50 3050 230

green@goltens.com

Kapteynlaan 15, 9351 VG Leek
The Netherlands



www.goltens.com