

STOCK LIST FOR 2-STROKE DIESEL ENGINES

Updated As: 7th July 2010

DESCRIPTION: EXHAUST VALVE SPINDLE

MAKER	MODEL	MATERIAL	STEM	AVAILABILITY
B&W	62 EF	SNCrW	NONE	UPON REQUEST
B&W	74 EF	SNCrW	NONE	UPON REQUEST
B&W	45GF(CA)	SNCrW	NONE	EX-STOCK
B&W	55GF(CA)	SNCrW	NONE	EX-STOCK
B&W	67GF(CA)	SNCrW	Cr	EX-STOCK
B&W	80 GF (CA)	SNCrW	Cr	EX-STOCK
B&W	90 GF	SNCrW	Cr	EX-STOCK
B&W	67 GB	SNCrW	Cr	UPON REQUEST
B&W	35 MC	SNCrW	Cr	EX-STOCK
B&W	42 MC	SNCrW	Cr	UPON REQUEST
B&W	50 MC	SNCrW	Cr	UPON REQUEST
B&W	50 MC	NIMONIC	HVOF	EX-STOCK
B&W	60 MC	SNCrW	Cr	EX-STOCK
B&W	60 MC	SNCrW	HVOF	UPON REQUEST
B&W	60 MC	NIMONIC	Cr	EX-STOCK
B&W	70 MC	SNCrW	HVOF	UPON REQUEST
B&W	70 MC	SNCrW	Cr	EX-STOCK
B&W	70 MC	NIMONIC	Cr	EX-STOCK
B&W	80 MC	SNCrW	Cr	EX-STOCK
B&W	80 MC	NIMONIC	Cr	EX-STOCK
B&W	90 MC	SNCrW	Cr	UPON REQUEST
B&W	90 MC	NIMONIC	Cr	UPON REQUEST
SULZER	RTA 48	NIMONIC	Cr	EX-STOCK
SULZER	RTA 52	NIMONIC	Cr	EX-STOCK
SULZER	RTA 58	NIMONIC	Cr	UPON REQUEST
SULZER	RTA 62	NIMONIC	Cr	UPON REQUEST
SULZER	RTA 72	NIMONIC	Cr	EX-STOCK
SULZER	RTA 76	NIMONIC	Cr	UPON REQUEST
SULZER	RTA 84C	NIMONIC	Cr	EX-STOCK
SULZER	RTA 84M	NIMONIC	Cr	EX-STOCK

Remarks: Exhaust Valve Spindles are from OEM Japan

Note:

- Above spare parts are subject to unsold.
- Reconditioned Main Engine Components are available upon request.

DESCRIPTION: EXHAUST VALVE SEAT

MAKER	MODEL	AVAILABILITY
B&W	50 MC (Cooled Type)	UPON REQUEST
B&W	60 MC (Cooled Type)	UPON REQUEST
B&W	80 MC (W Type)	EX-STOCK
SULZER	RTA 52	UPON REQUEST
SULZER	RTA 58	UPON REQUEST
SULZER	RTA 62	UPON REQUEST
SULZER	RTA 72	UPON REQUEST
SULZER	RTA 76	UPON REQUEST



DESCRIPTION: EXHAUST VALVE HOUSING

MAKER	MODEL	AVAILABILITY
B&W	50 MC	UPON REQUEST
B&W	60 MC	UPON REQUEST
B&W	70 MC	UPON REQUEST
B&W	80 MC	UPON REQUEST

DESCRIPTION: PISTON CROWN

MAKER	MODEL	NO. OF RING GROOVES x SIZES (MM)	HEIGHT (MM)	MATERIAL	SKIRT LANDING HEIGHT (MM)	SKIRT STUD SIZE	AVAILABILITY	REMARKS
B&W	45 GF	5 X 10	220	FORGING			UPON REQUEST	LRS CERT
B&W	67 GF	5 X 12	345	FORGING			EX-STOCK	LRS CERT
B&W	35 MC	4 X 8	156	FORGING	13	M10	UPON REQUEST	LRS CERT
B&W	35 MC	1 X 9.5 + 3 X 8	204.5	FORGING	10.5	M10	UPON REQUEST	ABS CERT
B&W	42 MC	2 X 11 + 2 X 8	180	FORGING			UPON REQUEST	LRS CERT
B&W	42 MC	4 X 8	180	FORGING		M12	UPON REQUEST	LRS CERT
B&W	50 MC	4 X 9.5	210	CASTING	2 & 10	M10 & M12	EX-STOCK	LRS CERT
B&W	50 MC	4 X 9.5	210	FORGING	2 & 10	M10 & M12	EX-STOCK	LRS CERT
B&W	50 MC	2 X 12.5 + 2 X 9.5	210	CASTING	2	M12	UPON REQUEST	LRS CERT
B&W	50 MC	2 X 12.5 + 2 X 9.5	267	FORGING	2	M12	EX-STOCK	LRS CERT
B&W	50 MC	1 X 12.5 + 3 X 9.5	210	FORGING	2	M12	UPON REQUEST	LRS CERT
B&W	60 MC	4 X 11	250	CASTING	2 & 15	M 12 & M16	EX-STOCK	LRS CERT
B&W	60 MC	4 X 11	250	FORGING	2 & 15	M 12 & M16	EX-STOCK	LRS CERT
B&W	60 MC	1 X 14 + 3 X 11	250	CASTING	2 & 15	M 12 & M16	UPON REQUEST	LRS CERT
B&W	60 MC	2 X 14 + 2 X 11	250	CASTING	2 & 15	M 12 & M16	UPON REQUEST	LRS CERT
B&W	60 MC	1 X 14 + 3 X 11	312.5	FORGING	2	M12	UPON REQUEST	LRS CERT
B&W	60 MC	2 X 14 + 2 X 11	312.5	FORGING	2	M16	UPON REQUEST	LRS CERT
B&W	70 MC	4 X 12	294	CASTING	2 & 20	M16	UPON REQUEST	LRS CERT
B&W	70 MC	2 X 16 + 2 X 12	294	CASTING	2 & 20	M16	EX-STOCK	LRS CERT
B&W	70 MC	2 X 16 + 2 X 12	375	FORGING	2 & 20	M16	UPON REQUEST	LRS CERT
B&W	70 MC	2 X 16 + 2 X 12	294	FORGING	2 & 20	M16	UPON REQUEST	LRS CERT
B&W	80 MC	4 X 14	345	FORGING	2 & 20	M20	UPON REQUEST	LRS CERT
B&W	80 MC	2 X 18 + 2 X 14	345	FORGING	2 & 20	M20	UPON REQUEST	LRS CERT
B&W	80 MC	2 X 18 + 2 X 14	428	FORGING	2 & 20	M20	UPON REQUEST	LRS CERT
B&W	90 MC	1 X 19.5 + 3 X 15 (MEXICAN TOP)	469	FORGING	2	M20	UPON REQUEST	LRS CERT
SULZER	RTA 48T/B	4 X 15	240	FORGING	15		EX-STOCK	LRS CERT
SULZER	RTA 52	2 X 12.3 + 3 X 12.15	284	FORGING			EX-STOCK	LRS CERT
SULZER	RTA 52U	2 X 12.3 + 2 X 12.15	284	FORGING			UPON REQUEST	
SULZER	RTA 52U	1 X 15 + 3 X 12	284	FORGING			EX-STOCK	ABS CERT
SULZER	RTA 58	2 X 12.25 + 3 X 12.13	309	FORGING			EX-STOCK	LRS CERT
SULZER	RTA 58	1X 16 + 4 X 12	309	FORGING			EX-STOCK	
SULZER	RTA 62	2 X 13.33 + 3 X 13.16	336	FORGING			UPON REQUEST	LRS CERT
SULZER	RTA 62	1x17.37+1x13.33+3x13.16	336	FORGING			UPON REQUEST	LRS CERT
SULZER	RTA 62U	1x17.37+1x13.33+2x13.24	336	FORGING			UPON REQUEST	LRS CERT
SULZER	RTA 72	2 X 14.35 + 3 X 14.18	393	FORGING			EX-STOCK	LRS CERT
SULZER	RTA 72	1x18.40+1x14.36+3x14.18	393	FORGING			UPON REQUEST	LRS CERT
SULZER	RTA 72U	1 X 18.40 + 3 X 14.36	393	FORGING			UPON REQUEST	LRS CERT
SULZER	RTA 76	2 x 14.29 + 3 x 14.14	426	FORGING			EX-STOCK	LRS CERT
SULZER	RTA 76	1x18.40+1x14.29+3x14.14	426	FORGING			UPON REQUEST	LRS CERT
SULZER	RTA 84	1 X 20.45 + 1 X 16.33 + 3 X 16.21	475	FORGING			EX-STOCK	ABS CERT
SULZER	RTA 84	1 X 20 + 4 X 16	475	FORGING			EX-STOCK	ABS CERT
SULZER	RTA 84C	2X16.33 + 3X16.16	425	FORGING			EX-STOCK	ABS CERT
SULZER	RTA 84C	1x20.44+1x16.33+3x16.16	425	FORGING			EX-STOCK	LRS CERT
SULZER	RTA 84M	1 X 20.44 + 1 X 16.33 + 3 X 16.16	425	FORGING			EX-STOCK	ABS CERT
SULZER	RTA 84T	1 X 20 + 4 X 16	460	FORGING			EX-STOCK	ABS CERT
SULZER	RTA 84TB	4 x 15	240				UPON REQUEST	LRS CERT
MAN	KSZ 52/105	4 x 10	270				UPON REQUEST	LRS CERT
MAN	70/125 BL	5 X 13 (MEXICAN TOP / 2nd GEN.)	-	-	-	-	UPON REQUEST	LRS CERT
MAN	70/125 BL	5 X 13 (FLAT TOP / 2nd GEN.)	-	-	-	-	UPON REQUEST	LRS CERT

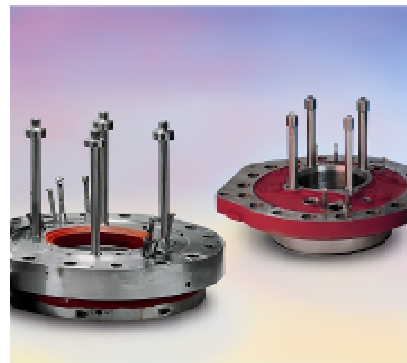
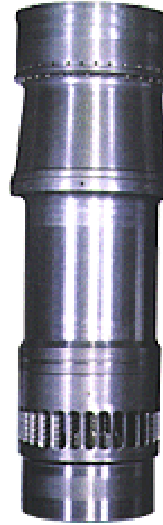


Note:

- Above spare parts are subject to unsold.
- Reconditioned Main Engine Components are available upon request.

DESCRIPTION: CYLINDER LINER

MAKER	MODEL	AVAILABILITY	REMARKS
B&W	55 GFCA	EX-STOCK	LRS CERT
B&W	L 67GFCA	UPON REQUEST	LRS CERT
B&W	L 80GFCA	UPON REQUEST	TARKALLOY / LRS CERT
B&W	L 42MC	UPON REQUEST	LRS CERT
B&W	S 50MC	UPON REQUEST	LRS CERT
B&W	S 50MC-C	UPON REQUEST	LRS CERT
B&W	L 60MC	EX-STOCK	MK III / LRS CERT
B&W	S 60MC	EX-STOCK	MK IV / LRS CERT
B&W	S 60MC-C	UPON REQUEST	LRS CERT
B&W	S 60MC	EX-STOCK	MK 6 /G.L CERT
B&W	L 70MC	EX-STOCK	LRS CERT
B&W	S 70MC	EX-STOCK	LRS CERT
B&W	S 70MC-C	EX-STOCK	LRS CERT
B&W	L 80MC	EX-STOCK	COOL TYPE / LRS CERT
B&W	S 80MC	UPON REQUEST	COOL TYPE / LRS CERT
B&W	S 80MC-C	UPON REQUEST	LRS CERT
B&W	K 80MC-C	EX-STOCK	LRS CERT
SULZER	RND 68M	EX-STOCK	DNV CERT
SULZER	RTA 58	UPON REQUEST	LRS CERT
SULZER	RTA 62	UPON REQUEST	SC:C / LRS CERT
SULZER	RTA 72	UPON REQUEST	SC:A / ABS CERT
SULZER	RTA 72	UPON REQUEST	SC:B / ABS CERT
SULZER	RTA 72U	UPON REQUEST	SC:C / ABS CERT
SULZER	RTA 76	UPON REQUEST	ABS CERT
SULZER	RTA 84	UPON REQUEST	LONG COLLAR
SULZER	RTA 84C	UPON REQUEST	ABS CERT
SULZER	RTA 84M	UPON REQUEST	SC:B / ABS CERT
SULZER	RTA 84T	UPON REQUEST	
SULZER	RL 76	UPON REQUEST	ABS CERT
SULZER	RL 90	UPON REQUEST	ABS CERT
MAN	KSZ 70/125 BL	UPON REQUEST	LRS CERT
MAN	KSZ 70/125 A	UPON REQUEST	LRS CERT
UEC	52 LA	EX-STOCK	NK CERT



DESCRIPTION: CYLINDER COVER

MAKER	MODEL	AVAILABILITY	REMARKS
SULZER	RLB 66	UPON REQUEST	LR CERT
SULZER	RLB 90	UPON REQUEST	LR CERT
SULZER	RTA 58	EX-STOCK	G.L CERT
SULZER	RTA 62	UPON REQUEST	G.L CERT
MAN	KSZ 70/125 BL	EX-STOCK	MILLED COOLING CANAL / LRS CERT

Note:

- Above spare parts are subject to unsold.
- Reconditioned Main Engine Components are available upon request.