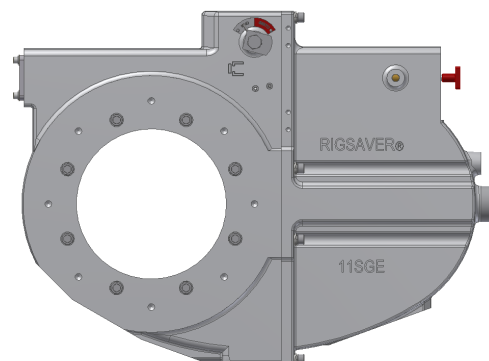


Upgrade to Next Generation

Upgrade your legacy 11SGE shut off valve to the Next Generation, and extend the life of your valve by introducing our recommended maintenance schedule.

Benefits of Upgrading

- Higher durability and vibration resistance
- Reduces the required activation pressure to improve reliability
- High quality o-ring seals for better serviceability
- Eliminates charge air leakage
- Larger manual action handle allows user to actuate valve with twist action
- Optimizes components for serviceability



Applications

Diesel engines primarily for offshore power generation.

Engine Manufacturers

- CAT*
- Wartsila*
- EMD*
- HHI*
- Bergen*
- MAN*

*Note: These are registered trademarks of each referenced company.

Affected Products/Components

Legacy 11SGE (11 inch) shut off valve manufactured before January 1, 2014.

- After extended periods of vibration, valve may require higher air pressure to activate.
- Maintenance schedule of the shut off valve not previously provided

The shut off valve can be operated manually or pneumatically in the case of an emergency. It completely blocks the engine intake system, cutting off both the external fuel source and the air required to keep the engine running.

The level of vibration applied to the Rigsaver 11SGE shutoff valve varies by application and location on the engine.

Based on these factors, the reliability and performance of the valve may diminish over time.

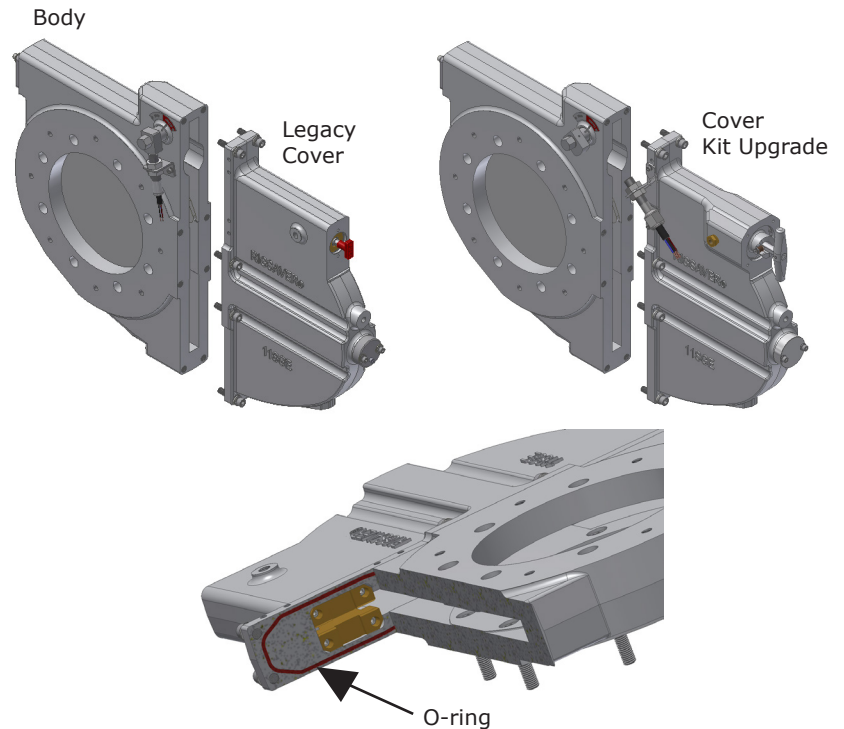
**For your nearest Goltens
location, please visit
www.goltens.com/contact**

It is recommended the user verify performance with regular cycle testing and adhere to the maintenance schedule contained in this document.

Cover Kit Upgrade

Upgrade your Legacy 11SGE Air Shutoff valve with our Cover Kit. It incorporates all the features and benefits of the Next Generation Valve. Cover Kit includes all components required to upgrade the spindle system and gate support mechanism as detailed below.

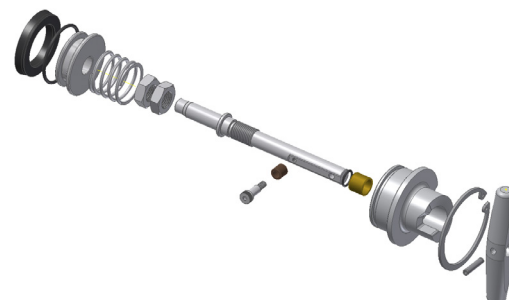
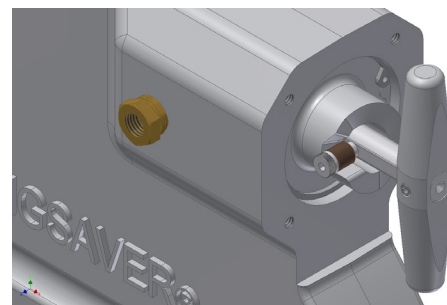
Easy field conversion - simply remove the cover from the installed body and replace with upgraded cover kit.



Spindle System

The spindle system is the mechanism that actuates the valve. With extended exposure to temperature and vibration, the components should be replaced periodically. Upgrading this system to the latest design improves the activation reliability.

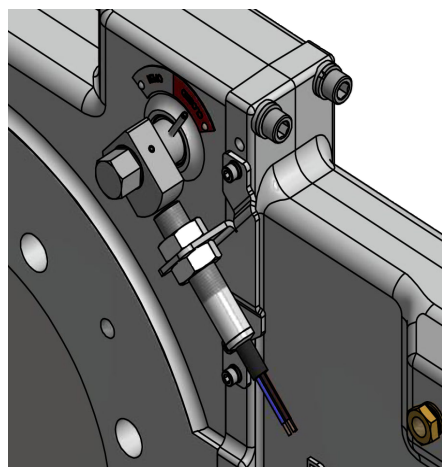
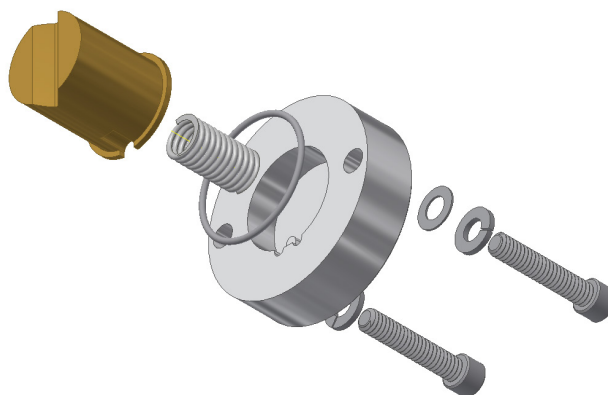
The new spindle design has a larger release handle and steel helix ramp. This allows for an alternate method to de-latch the valve. The handle may be activated by pulling it or 3/4 turn twist action.



Gate Support Mechanism

The Gate Support is critical to reducing wear on other valve components.

The gate support mechanism engages the valve gate in the retracted position (open). The life of the gate support mechanism can be greatly affected by the application and should be inspected by the operator. The next generation gate support mechanism utilizes a high temperature silicone o-ring, eliminating the need for the liquid sealant.



Non-Contact High-Temp Switch

We offer a non-contact high-temperature proximity switch for the Next Generation Rigsaver 11SGE shutoff valve. Contact Goltens (www.goltens.com/contact) for more information.

Maintenance Schedule

Once you have installed and tested the upgrade kit, we recommend you introduce the following maintenance schedule activities for this component.

Kit Part Numbers

Contact Goltens (www.goltens.com/contact) for the specific Kit Part Number for your valve.

| Engine Hours on Valve Body | 6,000 | 12,000 | 18,000 | 24,000 |
|----------------------------|-------|--------|--------|--------|
| Gate Support Kit | ● | | ● | |
| Spindle Kit | ● | | ● | |
| Cover Kit* | | ● | | |
| Replace Valve | | | | ● |

*Note: Includes Gate Support and Spindle Kits)